

Executive Control and Associated Brain Activity in Children With Familial High-Risk of Schizophrenia or Bipolar Disorder: A Danish Register-based Study

Line Korsgaard Johnsen^{1,2,✉}, Kit Melissa Larsen^{1,2}, Søren Asp Fuglsang¹, Anna Hester Ver Loren van Themaat^{1,2,✉}, William Frans Christiaan Baaré¹, Kathrine Skak Madsen^{1,3}, Kristoffer Hougaard Madsen^{1,4,✉}, Nicoline Hemager^{2,5,6,✉}, Anna Krogh Andreassen^{6,7,8}, Lotte Vedum^{6,7,8}, Aja Neergaard Greve^{6,7,8,✉}, Ayna Baladi Nejad⁹, Birgitte Klee Burton^{10,11,2}, Maja Gregersen^{5,6,✉}, Heike Eichele¹², Torben E. Lund¹³, Vibeke Bliksted^{13,6,7,8}, Anne Amalie Elgaard Thorup^{10,2}, Ole Mors^{6,7,8}, Kerstin Jessica Plessen^{14,2,6}, Merete Nordentoft^{10,16,5,6}, and Hartwig Roman Siebner^{1,10,15,16,*}

¹Danish Research Centre for Magnetic Resonance, Centre for Functional and Diagnostic Imaging and Research, Copenhagen University Hospital, Amager and Hvidovre, Copenhagen, Denmark; ²Child and Adolescent Mental Health Center, Copenhagen University Hospital, Mental Health Services CPH, Copenhagen, Denmark; ³Radiography, Department of Technology, University College Copenhagen, Copenhagen, Denmark; ⁴Department of Applied Mathematics and Computer Science, Technical University of Denmark, Lyngby, Denmark; ⁵Copenhagen Research Center for Mental Health, CORE, Mental Health Centre Copenhagen, Copenhagen University Hospital, Gentofte, Mental Health Services, Capital Region, Denmark; ⁶The Lundbeck Foundation Initiative for Integrative Psychiatric Research (iPSYCH), Aarhus, Denmark; ⁷Department of Clinical Medicine, Faculty of Health and Medical Services, Aarhus University, Aarhus, Denmark; ⁸The Psychosis Research Unit, Aarhus University Hospital, Aarhus, Denmark; ⁹Medical and Science, Clinical Drug Development, Novo Nordisk A/S, Greater Copenhagen area, Denmark; ¹⁰Faculty of Health and Medical Sciences, Institute for Clinical Medicine, University of Copenhagen, Copenhagen, Denmark; ¹¹Department of Child and Adolescent Psychiatry, Copenhagen University Hospital, Psychiatry Region Zealand, Roskilde, Denmark; ¹²Division of Psychiatry, Regional Resource Centre for Autism, ADHD and Tourette syndrome Western Norway, Haukeland University Hospital, Bergen, Norway; ¹³Center of Functionally Integrative Neuroscience, Aarhus University Hospital, Aarhus, Denmark; ¹⁴Division of Child and Adolescent Psychiatry, Department of Psychiatry, The University Hospital of Lausanne (CHUV) and University of Lausanne, Lausanne, Switzerland; ¹⁵Department of Neurology, Copenhagen University Hospital Bispebjerg, Copenhagen, Denmark

¹⁶Shared last authorship.

*To whom correspondence should be addressed; Hvidovre Hospital, Kettegård allé 30, 2650 Hvidovre, Denmark; tel: +4538626541, e-mail: hartwig.roman.siebner@regionh.dk

Background and Hypotheses: Impaired executive control is a potential prognostic and endophenotypic marker of schizophrenia (SZ) and bipolar disorder (BP). Assessing children with familial high-risk (FHR) of SZ or BP enables characterization of early risk markers and we hypothesize that they express impaired executive control as well as aberrant brain activation compared to population-based control (PBC) children. **Study Design:** Using a flanker task, we examined executive control together with functional magnetic resonance imaging (fMRI) in 11- to 12-year-old children with FHR of SZ (FHR-SZ) or FHR of BP (FHR-BP) and PBC children as part of a register-based, prospective cohort-study; The Danish High Risk and Resilience study—VIA 11. **Study Results:** We included 85 (44% female) FHR-SZ, 63 (52% female) FHR-BP and 98 (50% female) PBC in the analyses. Executive control effects, caused by the spatial visuomotor conflict, showed no differences between groups. Bayesian ANOVA of reaction time (RT) variability, quantified by the coefficient of variation (CV_{RT}), revealed a group effect with similarly higher CV_{RT} in FHR-BP and FHR-SZ compared to PBC ($BF_{10} =$

6.82). The fMRI analyses revealed no evidence for between-group differences in task-related brain activation. Post hoc analyses excluding children with psychiatric illness yielded same results. **Conclusion:** FHR-SZ and FHR-BP at age 11–12 show intact ability to resolve a spatial visuomotor conflict and neural efficacy. The increased variability in RT may reflect difficulties in maintaining sustained attention. Since variability in RT was independent of existing psychiatric illness, it may reflect a potential endophenotypic marker of risk.

Key words: functional magnetic resonance imaging/task-related BOLD response/visuomotor response conflict/flanker task/neurocognitive functioning/genetic predisposition/endophenotype/cohort study

Introduction

Schizophrenia (SZ) and bipolar disorder (BP) are severe and heritable¹ psychiatric disorders.² Children of parents with SZ or BP (ie, familial high-risk; FHR) have twice as

high-risk for developing a severe mental disorder compared to the general population³ together with a wide range of other mental disorders before adulthood.⁴ Therefore, investigations in children with FHR of SZ or BP can contribute to the identification of factors of early neurodevelopmental vulnerability. Executive control represents the capability to withhold inappropriate responses and to detect and filter out irrelevant or conflicting information to the task at hand.^{5,6} Effective executive control relies on the integrity of the multiple demand network that mediate information, attention, and inhibitory processing, including areas of the anterior cingulate cortex (ACC), sub-areas of the parietal cortex, the premotor area, and the insula.⁷ Impaired executive control leads to impulsive behaviors which are common in individuals with neurodevelopmental disorders, including SZ, BP, and attention-deficit/hyperactivity disorder (ADHD). Impaired visuospatial-motor mapping in the context of interfering spatial instruction cues and associated changes in task-related brain activity have been reported in functional magnetic resonance imaging (fMRI) studies in individuals diagnosed with SZ^{8,9} and BP,^{8,10} as well as in individuals at clinical high-risk of SZ⁹ or BP,¹¹ and adults with FHR,^{12–19} demonstrating its potential as a prognostic and endophenotypic marker of severe mental disorder. This potential of executive control is also highlighted by the Research Domain Criteria Initiative (RDoc; see eg, the Response Selection sub-construct of the Research Domain Criteria Matrix; <https://www.nimh.nih.gov/research/research-funded-by-nimh/rdoc/constructs/cognitive-control>, accessed May 26, 2023). However, only a limited number of neurobiological investigations of young individuals (age <18) exist, leaving out information on early developmental aspects of the FHR state. The studies show that young individuals (age 8–25 years) with FHR of severe mental disorder display aberrant task-related brain activation in fMRI studies investigating selective attention and/or executive control.^{20–23} Yet, sample sizes are small, and results between studies are divergent which impedes finite conclusions.²⁴ This has motivated The Danish High Risk and Resilience Study to investigate the largest-to-date, representative, prospective cohort of age matched children with and without FHR of SZ or BP.^{25,26}

In the first wave of the Danish High Risk and Resilience Study, The VIA 7-study, 7-year-old children with FHR of SZ and BP exhibited behavioral neurocognitive impairments^{27–30} that persisted as a stable developmental deficit at age 11.³¹ Specifically, executive control was impaired along with higher variability in reaction times (RTs) at age 7 in children with FHR of SZ compared to controls.²⁷ The impairment in executive control at age seven may constitute an early endophenotype for the later development of SZ and BP.³² However, little is known about the functional properties of the neural networks mediating

executive control impairments in children with FHR of SZ or BP during the pre-pubertal neurodevelopmental period.

In the first follow-up of the VIA 7-study, The VIA 11 study,²⁶ we have assessed the cohort, now age 11, using the Flanker task in neuroimaging settings of electroencephalography³³ and fMRI. For the present paper we use the blood-oxygen level dependent (BOLD) signal obtained with fMRI to probe functional brain activation during executive control in the VIA 11 cohort. We hypothesized based on the findings from the VIA 7-study,^{27,34} that children with FHR-SZ and FHR-BP would have difficulties in solving the visuomotor response conflict induced by incompatible visuospatial cues. Further, we expected that FHR-SZ and FHR-BP children would display aberrant neural engagement of brain regions within the multiple demand network compared with PBC, based on previous studies.^{20–23} The flanker-EEG analyses will be presented in a separate paper.

Methods

For a detailed description of data acquisition and analyses procedures see the [eMethods](#).

Participants

Children were recruited through The Danish High-Risk and Resilience study—VIA 11, including children with at least one parent with SZ (ie, FHR-SZ) or BP (ie, FHR-BP), and children with parents without these two disorders (ie, PBC). The cohort and overall study design are detailed elsewhere.^{25,26}

Written informed consent was obtained from the parent or legal guardian of the child. Children received gift cards for their participation. The VIA 11 study was approved by the National Committee on Health Research Ethics (Protocol number: H 16043682) and the Danish Data Protection Agency (ID number RHP-2017-003, I-suite no. 05333) and conducted in accordance with the Declaration of Helsinki.

Data Acquisition

The children completed one ~10-min session of a modified arrow-version of the Eriksen flanker task^{35,36} with an equal amount of congruent and incongruent trial conditions ([eFigure 2](#) in [eMethods](#)). The task was completed during fMRI at 3 T to examine executive control-related brain activation. Preprocessing of fMRI data is described in [eMethods](#) section “[MRI acquisition and preprocessing](#)”.

Clinical assessment of the children was obtained on a separate day from the MRI session. See “[Clinical Measures](#)” section in the supplementum.

Behavioral Outcome Measures

The behavioral consequences of the visuomotor response conflict caused by spatially incompatible flanker stimuli were characterized by response accuracy (resp-acc) defined as the percentage of correct responses, mean reaction time (RT) defined as the time from the appearance of the target arrow to the button press in trials with correct responses, and global RT variability (RT_{CV}) defined as the standard deviation of RT divided by mean RT. Mean values were calculated for congruent and incongruent trials separately. To assess the flanker effect, we computed the difference between incongruent and congruent trials for resp-acc (denoted $\Delta_{resp-acc}$), RT (denoted Δ_{RT}), and RT_{CV} (denoted Δ_{RTCV}). For a detailed description of the behavioral outcome measures, please see the “Behavioral outcome measures, data analysis, and statistical inference” section in the eMethods. Additionally, we tested for between-group differences in the speed-accuracy trade-off. To accomplish this, we employed an RT distribution-analytical technique in which all trials were sub-divided into four clusters at the within-subject level, assigning them to one of four RT quartiles.³⁷ Mean values were computed for each RT quartile and denoted as time-bin 1–4. Time-bin 1 included all trials belonging to the 25% fastest responses. Conversely, time-bin 4 comprised the 25% slowest trials of each subject. Time-bin 1 thus represents behavior during fast, impulsive responses, whereas time-bin 4 represents behavior during slow, deliberate responses. Time-bins 2 and 3 lie in-between these two extremes. Since the flanker task introduced a visuospatial conflict between the spatial cue and the required motor response, time-bins were separately defined for overall faster congruent and overall slower incongruent trials. Several behavioral measures (eg, resp-acc, RT, $\Delta_{resp-acc}$, and Δ_{RT}) were subjected to RT distribution-analysis. This enabled us to test for between-group differences in task performance associated with the temporal RT dynamics and the presence or absence of a visuospatial response conflict.³⁷

Statistical Analyses

Statistical tests on behavioral and clinical outcome measures were performed in SPSS (IBM SPSS Statistics version 25, release 25.0.0.2) and JASP (JASP Team [2020], Version 0.8.1).³⁸ We used Bayesian ANOVA for testing group differences on the clinical measures. In case of non-normal distributed data, we used the non-parametric Kruskal–Wallis or Pearson chi-square test with three groups, see table 1 and eTable 5 in eMethods for details. Bayesian repeated measures ANOVAs were used for testing group differences on the behavioral outcome measures of RT and CV_{RT} . Models included Group as between-subject factor with three levels (FHR-SZ, FHR-BP, and PBC) and Condition as within-subject

factor with two levels (congruent, incongruent). $\Delta_{resp-acc}$, Δ_{RT} and Δ_{CVRT} were tested for group differences by separate Bayesian ANOVAs with Group as fixed effect.

Resp-acc data for congruent and incongruent trials, as well as in the RT distributional analyses, violated tests for normality and inference on resp-acc was therefore explored using automated non-parametric testing (Kruskall–Wallis) for independent samples in SPSS.

Normal distributed data for the RT distributional analysis ($Dist-\Delta_{resp-acc}$ and $Dist-\Delta_{RT}$) were analyzed with separate Bayesian repeated measures ANOVAs including $Dist-\Delta_{resp-acc}$ and $Dist-\Delta_{RT}$, respectively, as repeated measures factor with four levels (RT bin 1–4). Group was entered as a between-subject factor with three levels (FHR-BP, FHR-SZ, HC). Age, sex, and test-site were entered as covariates in all analyses. If evidence for effects of single covariates were present in the Bayesian analyses, analyses were rerun, including covariates as between-subject factors for inference on group by covariate effects. Group effects that met evidence for the alternative hypothesis larger than moderate were tested with post hoc comparisons with null control. Common frequentist statistics make binary inferences in terms of “significance” based on a *P*-value and a pre-specified statistical threshold. Conversely, Bayesian statistical estimates the relative level of evidence in favor or against the alternative hypothesis, expressed by the Bayes factor (BF). Further details on the interpretation of the BF can be found in the eMethods section “Behavioral outcome measures, data analysis and statistical inference”.

fMRI data were analyzed using a general linear model (GLM) in SPM12 (Wellcome Centre for Human Neuroimaging) run in MATLAB (The MathWorks, Inc., version R2020a update 3). See eMethods section “Statistical analyses” for a full account of the design. At the subject level a main incongruent > congruent contrast was formed based on task regressors and used to model successful executive control activation, as we only included trials in which the participants answered correctly. At the group-level, the main contrasts were analyzed in a univariate flexible factorial ANOVA with group (FHR-BP, FHR-SZ, PBC) as between-subject factor. In accordance with Woo et al.³⁹, we applied a cluster-forming threshold of *P* < .001, uncorrected, and a Gaussian random field-based family wise error (FWE) correction of *P* < .05 at the cluster level for reporting of significant clusters of brain activation. Regions of interest (ROIs) were defined as spheres with 10 mm radius centered at the peak activation coordinates from the whole-brain analysis testing the main effect of successful executive control (ie, incongruent > congruent contrast) across groups.

To test for a linear relationship between brain activity and increasing RT time, we sorted all responses in quartiles depending on the RT with bin1 including the 25% fastest responses and bin 4 comprising the 25%

Table 1. Demographic and clinical characteristics of the included children

	Total	FHR-BP	FHR-SZ	PBC	Bayes Factor ₁₀ ^d			
					Analysis of Effects	Post Hoc Comparisons		
						FHR-BP vs FHR-SZ	FHR-BP vs PBC	FHR-SZ vs PBC
Children, <i>n</i>	246	63	85	98	—	—	—	—
Females, <i>n</i> (%)	119 (48.4)	33 (52)	37 (44)	49 (50)	0.52 ^f	—	—	—
DRCMR test-site, <i>n</i> (%)	117 (47.6)	32 (50)	45 (53)	40 (41)	0.22 ^g	—	—	—
CFIN test-site, <i>n</i> (%)	129 (52.4)	31 (49)	40 (47)	58 (59)	—	—	—	—
Age at scan, mean years (SD)	12.1 (0.3)	12.1 (0.3)	12.1 (0.3)	12.1 (0.3)	0.1	—	—	—
Handedness, <i>n</i> (%) right-handed ^a	209 (85)	53 (84)	69 (81)	87 (89)	—	—	—	—
CBCL ^b	—	—	—	—	—	—	—	—
CBCL, Total score, mean (SD)	17 (19)	20 (21)	22 (21)	12 (13)	BF ₁₀ > 100	0.2	9.1	>100
CBCL, Externalizing score, mean (SD)	4 (5)	5 (6)	5 (7)	2 (3)	BF ₁₀ > 100	0.2	26.8	>100
CBCL, Internalizing score, mean (SD)	6 (6)	7 (7)	6 (6)	5 (5)	1.6	—	—	—
CGAS, mean score (SD) ^c	72 (15)	70 (15)	68 (15)	76 (14)	19.1	0.3	1.7	30.7
Any Axis-I disorder, <i>n</i> (%) ^c	103 (42)	32 (51)	44 (52)	27 (28)	0.001 ^f	—	—	—
ADHD, <i>n</i> (%) ^c	32 (13.0)	6 (9.5)	16 (18.8)	10 (10.2)	0.123 ^g	—	—	—

Demographic and clinical characteristics of 85 children at familial high-risk of schizophrenia (FHR-SZ), 63 children at familial high-risk of bipolar disorder (FHR-BP), and 98 population-based control (PBC) children from the Danish High Risk and Resilience Study—VIA 11.

DRCMR, Danish Research Center for Magnetic Resonance; CFIN, Center of Functionally Integrative Neuroscience; SD, standard deviation; CBCL, Child-behavior checklist; CGAS, Child Global Assessment Scale.

^aHandedness was assessed with the Edinburgh handedness inventory³³ (see “*Clinical Measures*” section in eMethods) and data is presented as % right-handed according to the laterality quotient score.

^bTwo participants (1.4%) did not complete the CBCL. Higher scores indicate more problem behavior on the total score as well as on the two broad-band subscales; Internalizing and Externalizing scores.

^cHigher scores (0–100) on the CGAS indicate higher global level of functioning.

^dBayes Factors (BF) were estimated with Bayesian analyses of variance (ANOVA) in favor of an effect of group (the alternative hypothesis), that is, BF₁₀, using default priors and 1000 iterations (see “Methods” section).

^eQuantification of any Axis-I disorder was obtained with the Schedule for Affective Disorders and Schizophrenia for School-Age Children–Present and Lifetime Version (K-SADS-PL) and depicts number of children with any past or present Axis-I diagnosis excluding elimination disorders. 244 children completed the questionnaire.

^fPearson chi-square test of independence.

^gKruskal–Wallis test.

^hQuantification of Attention-Deficit/hyperactivity Disorder (ADHD) was obtained with the K-SADS-PL and depicts number of children with any past or present ADHD diagnosis.

slowest responses. The RT bin quartiles were included as a first parametric modulator of interest in the first-level GLM. Brain-behavior correlations were performed on behavioral variables showing group effects. The fMRI analyses included age, sex, handedness, and test-site as covariates.

Additionally, we analyzed mean parameter estimates from the main contrast in ROI analyses within the Bayesian framework to characterize evidence for or against the alternative hypothesis. ROIs were defined as 10 mm spheres with their center placed according to peak activation coordinates (cluster-level FEW-corrected *P* < .05) from the main effect of the successful executive control activation analysis across groups. ROIs were included as a repeated measures factor with nine levels (ROI I, ROI II, etc.) and group as between-subject factors with three levels (ie, FHR-BP, FHR-SZ, PBC) in a Bayesian repeated measures ANOVA implemented in JASP.³⁸

Results

Demographic and clinical characteristics as well as the statistical test results of included children are presented in [table 1](#). The final sample consisted of 246 children: 85 children (44% female) with FHR-SZ, 63 children (52% female) with FHR-BP and 98 (50% female) PBC. The three groups were comparable on age (BF₁₀ = 0.1, moderate evidence against a group effect), handedness (BF₁₀ = 0.09, strong evidence against group effect), and sex (Pearson chi-square, *P* = .52). Children with FHR-SZ and FHR-BP presented with higher behavioral problem scores on the total score and on the externalizing score compared to PBC (total score; FHR-SZ vs PBC: BF₁₀ > 100, FHR-BP vs PBC: BF₁₀ = 9.1. Externalizing score; FHR-SZ vs PBC: BF₁₀ > 100, FHR-BP vs PBC: BF₁₀ = 26.8), and lower global functioning scores for FHR-SZ compared to PBC (BF₁₀ = 30.7). The behavioral problem score nor the global functioning score differed between

FHR-SZ and FHR-BP. There was higher incidence of Axis-I disorders in both the FHR groups compared to PBC (Pearson chi-square, $P < .001$), however the number of ADHD diagnoses was similar between groups (Kruskal–Wallis, $P = 0.123$).

Behavioral Executive Control

The three groups performed similarly on resp-acc across conditions ($P = .218$, congruent, $P = .135$, incongruent), with all groups showing higher accuracies on congruent trials compared to incongruent trials (figure 1, top row, and supplemental eTable 5). All groups showed slower RT for incongruent trials compared to congruent trials ($BF_{10} > 100$) with similar mean values ($BF_{10} = .22$), see figure 1, middle row. Across the two conditions the variability of response timing, RT_{CV} , differed between groups ($BF_{10} = 6.88$) indicating that children with FHR-SZ and children with FHR-BP showed higher RT_{CV} compared to PBC, figure 1 bottom row. Sex and test-site showed strong ($BF_{10} = 19.9$) and decisive ($BF_{10} > 100$) effects on RT_{CV} , respectively. Adding these as between-subject factors revealed no interaction with the group effect.

The speed-accuracy trade-off analysis revealed an effect of time-bin for the congruent (Friedman's ANOVA, $P = .034$) and incongruent (Friedman's ANOVA, $P < .001$) condition, showing higher accuracies in the slowest, most deliberate trials. This trade-off was similar across all three groups, figure 2B. Groups did not differ on the Flanker effect for either accuracy ($\text{Dist-}\Delta_{\text{resp-acc}}$, $BF_{10} = .11$) or RT ($\text{Dist-}\Delta_{\text{RT}}$, $BF_{10} = .15$), figure 2C and D, respectively.

Executive Control-related Brain Activation

To ensure that our task engaged the relevant executive control network, we investigated the main congruency effect on brain activity across groups. In accordance with the task-related activation patterns that have been reported in two previous meta-analyses,^{7,40} we found consistent task-related activations in brain regions supporting executive control. The activation pattern comprised nine clusters across the three groups (figure 3A, and eTable 2 in eMethods): the left cerebellar crus II, the inferior division of right and left lateral occipital cortex, left and right insula, right precentral gyrus, left supplementary motor area (SMA), right middle frontal gyrus (MFG), and left superior frontal gyrus (all $P < .05$, cluster-level corrected). We found no significant main effect of group in the whole-brain analyses regarding the main congruency effect. This was confirmed in the ROI analysis using Bayesian inference (figure 3B, and eTable 6 A in eMethods).

The speed-accuracy trade-off analysis including time-bin as a first parametric modulation of interest revealed 10 significant clusters of increased activation with increased time-bin (ie, slower RTs) spanning insular,

frontotemporal, striatal, thalamic, and cingulate brain areas for the congruent condition (figure 3C, and eTable 3 in eMethods). For the incongruent condition nine significant clusters of increased activation with increased time-bin (ie, slower RTs) were located within temporoparietal, thalamic, striatal, and occipital brain areas (figure 3C, and eTable 3 in eMethods). This network was stable across groups and confirmed in a follow-up ROI analysis using Bayesian inference (figure 3D, and eTable 6B and C in eMethods).

To follow-up on the behavioral findings of moderate evidence for an effect of group on RT variability, RT_{CV} was added as a regressor of interest in two independent second level analyses. We entered RT_{CV} for congruent and incongruent trials and used the contrast of congruent > 0 and incongruent > 0 from the first level, respectively. For the congruent contrast, we found a significant negative relationship between RT_{CV} and brain activity in four clusters within occipital and parietal brain areas across the three groups (figure 4, supplementary eTable 4). This network was similar across groups.

To disentangle effects of FHR from that of existing psychiatric diagnoses, we replicated all analyses excluding all children with any past or present Axis-I diagnosis ($n = 103$). These post hoc analyses resulted in similar findings as the ones reported in the total sample.

Discussion

We show evidence that children with FHR for SZ or BP express higher variability in RT during a spatial visuo-motor response conflict task, probing executive control. This variability persisted when excluding children with any past or present psychiatric diagnosis. We therefore argue that this increased variability in response timing might reflect an endophenotypic trait for risk of SZ and BP. The behavioral fingerprint was not accompanied by altered group-wise brain responses, indicating a similar brain network engagement when solving the flanker task.

The increased RT variability, indexed by a higher RT_{CV} , was observed in children with FHR-SZ and FHR-BP independently of the presence or absence of a visuospatial response conflict. A more variable timing of responses in the FHR groups agrees with previous results from this cohort, observed at age 7.^{27,28} It also extends earlier findings in children with FHR of SZ or BP beyond those already reported in this cohort across different paradigms, testing attentional, and executive control abilities.^{17,23,41} Indeed, larger variability of RT is shared across many disorders such as ADHD, SZ and BP^{42–44} and refers to an increased within-subject fluctuation of trial-to-trial behavior making it an attentional attribute related to the maintenance of continuous performance.⁴⁵

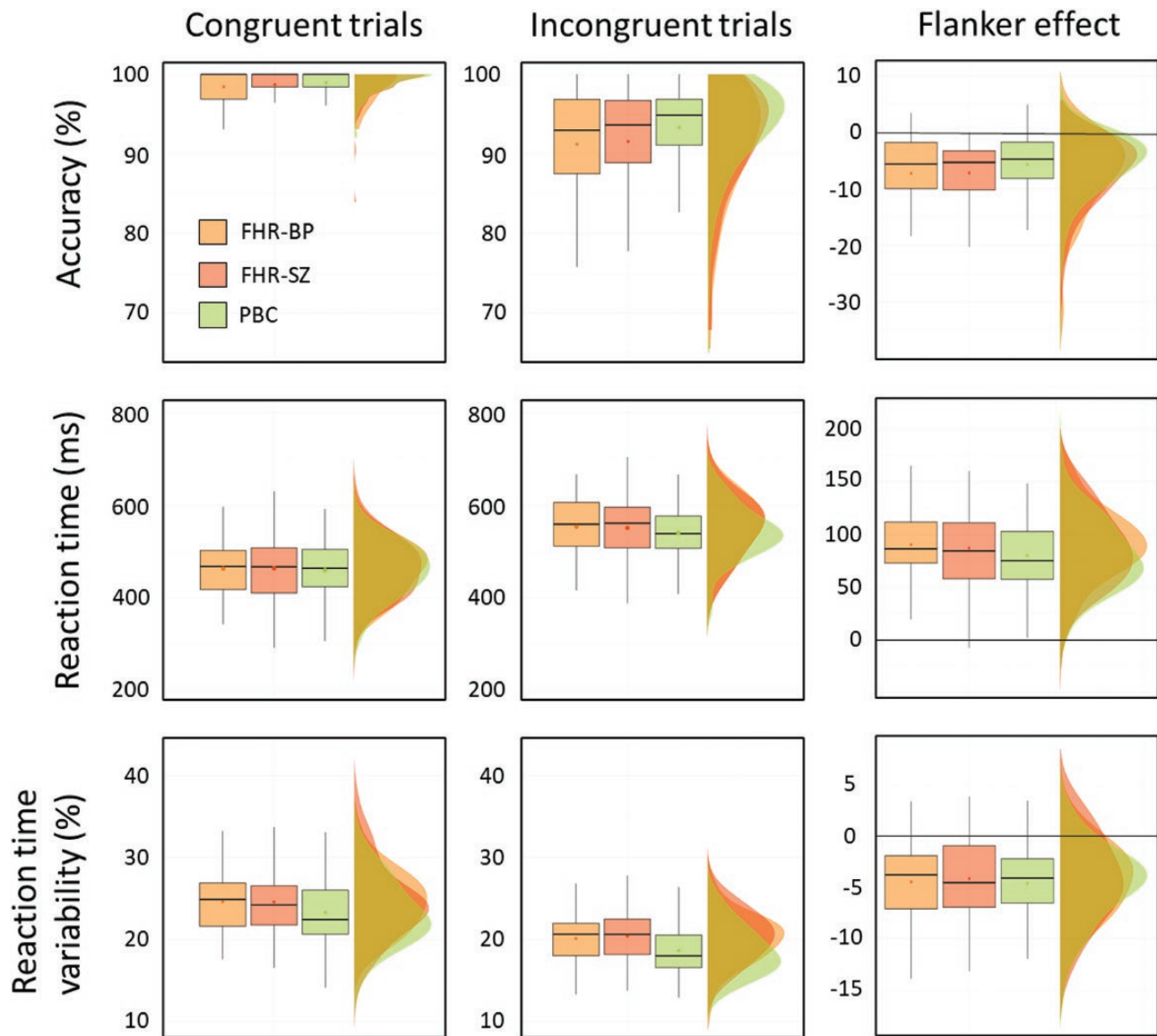


Fig. 1. Task performance measures, that is, response accuracy, reaction time and reaction time variability on the modified arrow-version of the Eriksen flanker task for children at familial high-risk (FHR) of schizophrenia (FHR-SZ; dark orange), bipolar disorder (FHR-BP; light orange), or neither of these disorders (population-based controls [PBC]; green). Data has been plotted as typical boxplots illustrating the minimum, maximum, median, first quartile, and third quartile, as well as the data distribution clouds to match. The dot within each boxplot illustrates the mean value. Performance across the three groups shows an overall decrease in accuracy rate (top horizontal panel), and an overall increase in reaction time (middle horizontal panel), from congruent (left vertical panel) to incongruent (middle vertical panel) trial conditions as well as the difference (ie, the flanker effect) in these measures (right vertical panel). Values larger than zero indicate an increase in performance measure from incongruent to congruent conditions whereas values lower than zero indicate a lower performance measure. The bottom horizontal panel shows reaction time variability, calculated as the coefficient of variation ($CV = \sigma\{RT\} / \mu\{RT\} \cdot 100\%$) in which there was moderate evidence (Bayes factor $[BF]_{10} = 6.8$) for an effect of group but moderate evidence against ($BF_{10} = 0.22$) a group by condition (ie, congruent and incongruent) interaction. ms; milliseconds, FHR-SZ; Familial high-risk of schizophrenia, FHR-BP; Familial high-risk of bipolar disorder, PBC; Population-based controls.

In addition to the increased variability in RT at age 7, the children with FHR in the VIA 7-study showed impaired executive control (ie, response accuracy [resp-acc] and mean RT)²⁷ which was hypothesized to still be present at age 11. Indeed, separate analyses of 23 neurocognitive measures in this cohort, spanning multiple domains from age 7 to 11 showed a stable developmental deficit for the children with FHR of SZ compared to controls.³¹

However, we found evidence against between-group differences in executive control at age 11–12. This finding suggests that impaired executive control may be of transitory character, or it may be attributed to methodological factors. The flanker paradigm used at age 7 was run at a faster pace with relatively short inter-trial interval (ITI; 900 ms) and applied in a larger sample size ($n = 492$). In our fMRI study, we implemented a slower version of

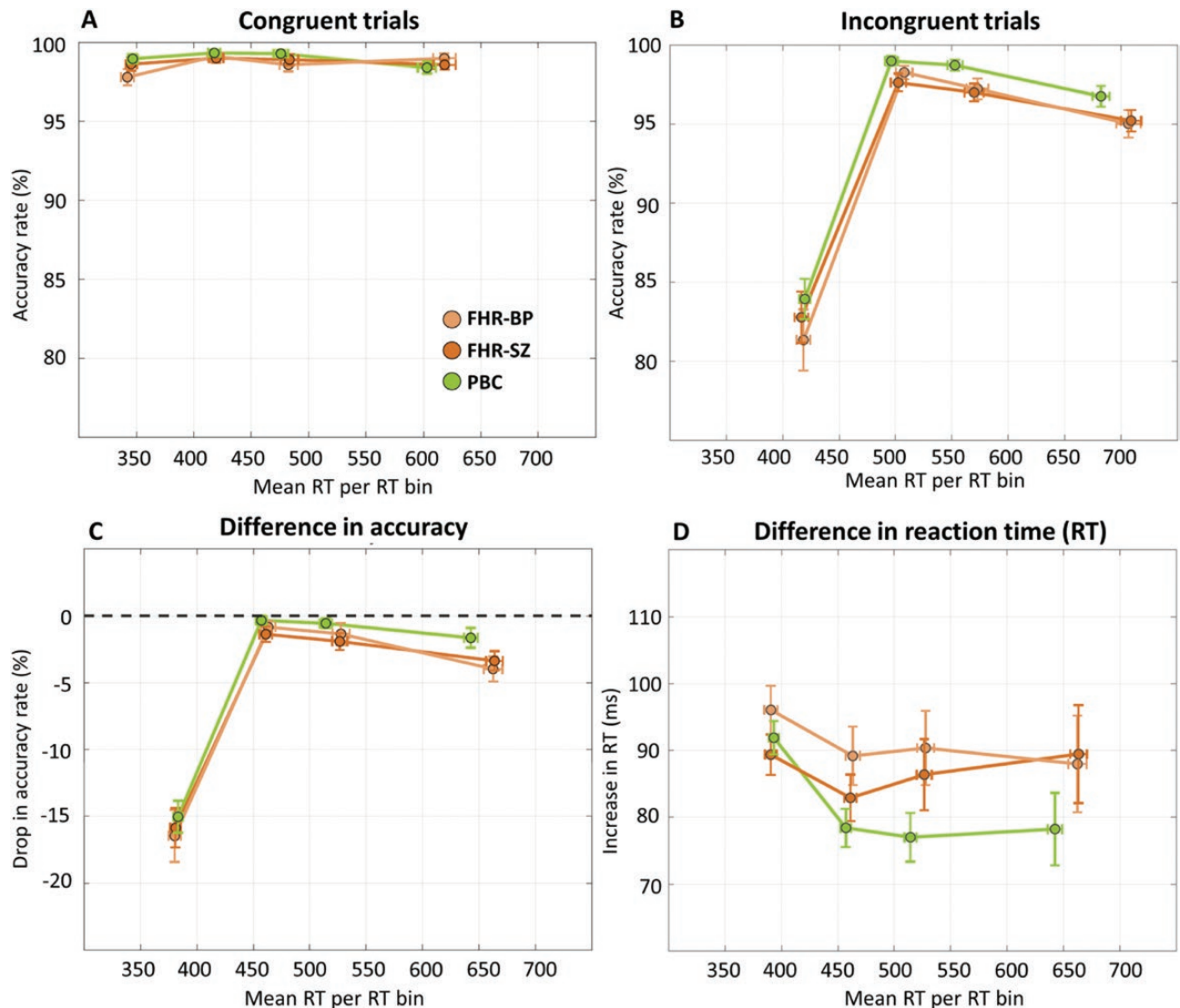


Fig. 2. Reaction time (RT) distribution-analysis of response accuracy rate on congruent (A) and incongruent (B) trials (Dist-resp-acc). Delta plots show the magnitude of flanker effects on response accuracy rate (C; Dist- $\Delta_{\text{resp-acc}}$) and RT (D; Dist- Δ_{RT}) as a function of RT on the modified arrow-version of the Eriksen flanker task for children at familial high-risk of schizophrenia (FHR-SZ), bipolar disorder (FHR-BP) or neither of these disorders (population-based controls; PBC). Mean RTs are plotted according to the 1st, 2nd, 3rd, and 4th quartile of RTs according individual RT distributions for correct-proceeded-by-correct trials (see eMethods section “[Behavioral outcome measures, data analysis and statistical inference](#)”). Error bars indicate standard error of the mean (SEM) calculated by σ/\sqrt{n} and illustrated for both mean RTs of the quartiles as well as the accuracy rates (A–C) and the drop in RT (D).

the task to accommodate the sluggishness of the hemodynamic response. The longer ITIs may have resulted in a less demanding paradigm. It is thus possible that the high-risk groups would have maintained impaired performance in a more challenging setting with shorter ITIs.

Meta-analytical evidence, based on samples with broad age ranges that may obscure neurocognitive developmental factors, have shown impaired executive control using Stroop tasks in young (age 15–29) individuals with FHR of SZ⁴⁶ with small to medium effect sizes (Cohen’s $d = 0.28$ [95% CI 0.04–0.52]), and in youth (mean age 10–25) with FHR of BP⁴⁷ with similar effect sizes (Cohen’s $d = 0.3$ [95% CI 0.11–0.48]) when compared to controls. The Stroop task is, like the Flanker

task, used to assess executive functions.^{48,49} However, intact executive control measured with Stroop in child and adolescent offspring of patients diagnosed with schizophrenia or bipolar disorder at baseline (age: 10–12 years) and follow-up (age: 12–14 years) have also been shown,⁵⁰ leaving this cognitive measure yet unresolved as a candidate endophenotype in young FHR populations.

Our task reliably evoked executive control-related brain activation in areas typically associated with executive control, that is, cerebellar, occipital, parietal, premotor, and prefrontal areas.^{7,40,51–54} Within this network, task-related brain activation was comparable between our three groups. In child FHR populations, fMRI investigations of task-related activation together with executive

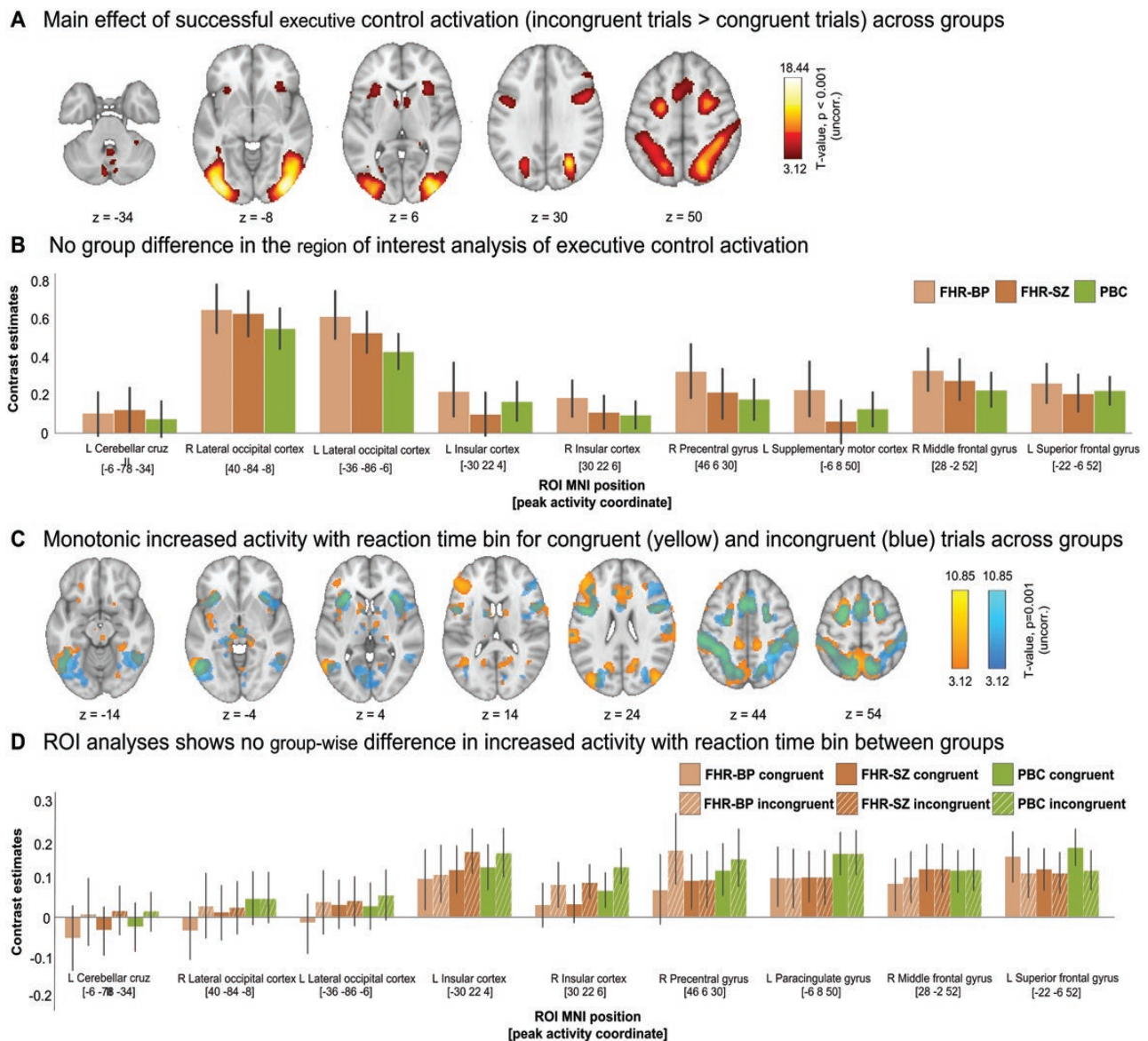


Fig. 3. Executive control-related brain activation results from 63 children with familial high-risk (FHR) of bipolar disorder (FHR-BP), 85 children with FHR of schizophrenia (FHR-SZ) and 98 population-based control children without FHR of these disorders. (A) The group-level whole-brain analysis on the contrast between correct incongruent trials larger than correct congruent trials (successful executive control activation) showed significant increased activation in nine task-related clusters (cluster-level FWE-corrected $P < .05$) within areas of cerebellum, left and right lateral occipital cortex, left and right insular cortex, right precentral cortex, left supplementary motor area, middle frontal gyrus, and superior frontal gyrus. The color bar indicates T -values. The analysis did not show any significant group differences or any significant condition by group interactions. (B) Bar plot showing contrast estimates (CE) from the region of interest (ROI) analysis on the successful executive control activation. Error bars indicate the standard deviation. (C) Whole-brain activation modulated by reaction time (RT) bin on correct congruent trials larger than 0 (yellow) and correct incongruent trials larger than zero (blue) across groups. There was no significant between-group difference. (D) Bar plot showing CE from the ROI analysis on the brain activation modulated by RT bin analysis. Congruent CE are solid bars, incongruent contrast estimated are scratched bars. Error bars indicate the standard deviation. Incongruent CE are shown with hatched bars.

control are scarce.^{15,24} To the best of our knowledge, this is the first task-based fMRI study on executive control in children with FHR of SZ. Tapping into executive control, a small fMRI study examined task-related activation during a stop-signal task in 13 adolescents with FHR of BP (mean age ~13 years).²⁰ The study reported significantly greater activation in putamen during unsuccessful

motor inhibition compared to children without FHR ($n = 24$, mean age ~14).²⁰ Another study on cognitive flexibility (using a change task), reported that youth with FHR of BP ($n = 13$, mean age ~14 years) showed increased activity in ventrolateral prefrontal and inferior parietal areas during successful cognitive flexibility and increased brain activation in the caudate nucleus during

Increased brain activity with lower reaction time variability on congruent (yellow) and incongruent (blue) trial condition across children with familial high risk of schizophrenia, bipolar disorder or neither of these disorder

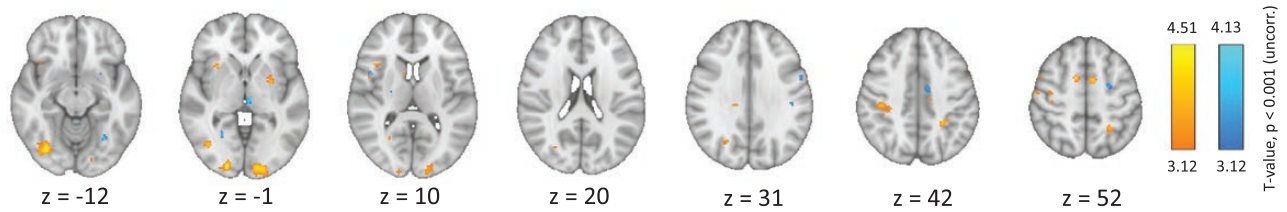


Fig. 4. Whole brain blood-oxygen level-dependent (BOLD) response with reaction time (RT) variability—calculated as the coefficient of variation (CV)—as linear regressor of interest across 63 children at familial high-risk (FHR) of bipolar disorder (FHR-BP), 85 children with FHR of schizophrenia (FHR-SZ), and 98 children without FHR of these disorders (population-based controls). Contrast images are based on correct responses on congruent trial events > 0 (yellow) and incongruent trials events > 0 (blue) and show brain activation as a function of lower reaction variability—a reaction time stability network that is.

failed change trials compared to controls ($n = 21$, mean age ~ 14).²² Together these studies point to hyper-activity of dorso-striatal structures as a mechanism for failing inhibitory processes in children with FHR of BP. However, the sample sizes of these two studies are very small, bearing a considerable risk of false positive findings. In addition, the focus on unsuccessful inhibition makes comparison to the current investigation challenging. In our setup, most of the children completed the task without mistakes. Their performance thus limits us from assessing unsuccessful executive control.

Our study has strengths and weaknesses. The present study includes the largest number of children (>100) with FHR of SZ or BP at a similar young age of 11–12. Throughout adolescence, executive control continues to improve until full maturation in adulthood.^{55–57} Therefore, the mean age of the children in our cohort represents a developmentally sensitive time during which continuous brain changes in relation to maturation and behavioral performance occur in parallel.⁵⁸ Using a sample with a narrow age range reduces the risk of obscuring age effects of neurocognitive and brain maturation in the event of a developmental lag.⁵⁹ However, the pre-adolescent age-group may also leave our analysis too early in development to detect neurobiological differences that may arise later in life.

Tasks that probe aspects of executive control, such as the flanker task, may be influenced by other cognitive processes. While the flanker task is designed to probe executive control, other aspects of cognition are also engaged such as visuospatial attention and working memory. The increased variability in RT which we found in children with FHR-SZ and FHR-BP is compatible with subtle impairments in these domains. For instance, a reduced ability to sustain attention across trials may increase the variability in RT. Notably, however, we would like to stress that we did not find any consistent group-wise differences in behavior and fMRI-based measures of executive control in our study. We have thus no reason to assume that a reduced ability to reorient spatial attention or reduced working memory capacity had a relevant detrimental effect on executive control during task-based

fMRI. Therefore, we did not consider these cognitive domains in the statistical models of our fMRI analyses.

The cross-sectional design of the present study precludes any causal interpretations regarding risk of later development of BP and SZ. Longitudinal studies investigating the developmental trajectories of possible cognitive and/or neurobiological deficits are warranted to assess the state or trait nature of the (possible) early endophenotypic markers for SZ and BP. Our follow-up study, The VIA 15 study,⁶⁰ will enable us to explore these aspects. Another important point is that children at FHR-SZ and FHR-BP in the present study were grouped based on the parent's psychiatric history. Offspring of parents with either SZ or BP have not only increased risk of developing the specific disorder that is expressed by the parent, but also an increased risk for a broad range of other psychiatric disorders.^{3,4} Thus, we cannot conclude from the results of the current paper that the variability in the timing of responses distinguishing children at FHR-SZ and FHR-BP from PBC is specific to the risk for SZ vs BP itself or not. Further, the rate of conversion to SZ or BP in FHR cohorts is estimated at approximately 10%–40%.^{61,62} Hence, many of the included children will undergo development that does not result in SZ or BP. Therefore, the robustness of the effects must be relatively large to show statistical significance.

In conclusion, we found no differences in executive control or related brain activity in the largest cohort of 11- to 12-year-old children with FHR-SZ and FHR-BP compared to PBC. However, a main effect of group on the variability of timing of responses was observed indicating that, independent of the visuospatial response conflict, children with FHR-SZ and FHR-BP were more variable in the timing of their responses. This timing variability of responses during the task was also independent of past or present psychopathology, making this behavioral feature a possible endophenotypic trait marker for risk of SZ or BP. Longitudinal designs are warranted to illuminate developmental trajectories in individuals that may go on to develop SZ or BP.

Supplementary Material

Supplementary material is available at <https://academic.oup.com/schizophreniabulletin/>.

Acknowledgments

We thank all the children and their families for participating in the Danish High Risk and Resilience Study. A special thanks to Benthe E. Vink, Jonas S. Ingerslev, Daban Sulaiman, Gökze M. Akkas, Natascha Larsen, Malte Lundby, Anna K. Møller and Agnete H. Albertsen at DRCMR, as well as Christina B. Knudsen, Nanna L. Steffensen, Merete Birk, Anette F. Bundgaard, Oskar Jefsen and Henriette Stadsgaard at CFIN for their effort in data acquisition. We also acknowledge Line Carmichael for coordinating recruitment, Jessica Ohland for handling the database, and Simon Y. Jensen for support in data analysis. Hartwig R. Siebner has received honoraria as speaker from Sanofi Genzyme, Denmark, Lundbeck AS, Denmark, and Novartis, Denmark, as consultant from Sanofi Genzyme, Denmark, Lophora, Denmark, and Lundbeck AS, Denmark, and as editor-in-chief (NeuroImage Clinical) and senior editor (NeuroImage) from Elsevier Publishers, Amsterdam, The Netherlands. He has received royalties as book editor from Springer Publishers, Stuttgart, Germany and from Gyldendal Publishers, Copenhagen, Denmark. During preparation of the manuscript, Ayna Baladi Nejad changed employment to Novo Nordisk A/S.

Funding

This study was funded by The Lundbeck Foundation Initiative for Integrative Psychiatric Research - iPSYCH (grant number R248-2017-2003) and Innovation Fund Denmark (grant number 6152-00002B). Additionally, LKJ was funded by The Independent Research Fund (grant number DFF - 6110-00139), Denmark, and KML received funding from Mental Health services—Capital Region of Denmark (no grant number given) as well as the Lundbeck Foundation (grant number R322-2019-2311). Hartwig R. Siebner holds a 5-year professorship in precision medicine at the Faculty of Health Sciences and Medicine, University of Copenhagen which is sponsored by the Lundbeck Foundation (grant number R186-2015-2138). The funders had no role in study design, data collection, data analysis, data interpretation, decision to publish or preparation of the manuscript.

References

1. Martin AR, Daly MJ, Robinson EB, Hyman SE, Neale BM. Predicting polygenic risk of psychiatric disorders. *Biol Psychiatry*. 2019;86(2):97–109.
2. Angst J, Preisig M. Outcome of a clinical cohort of unipolar, bipolar and schizoaffective patients. Results of a prospective

study from 1959 to 1985. *Schweiz Arch Neurol Psychiatr* (1985). 1995;146(1):17–23.

3. Rasic D, Hajek T, Alda M, Uher R. Risk of mental illness in offspring of parents with schizophrenia, bipolar disorder, and major depressive disorder: a meta-analysis of family high-risk studies. *Schizophr Bull*. 2014;40(1):28–38.
4. Thorup AAE, Laursen TM, Munk-Olsen T, et al. Incidence of child and adolescent mental disorders in children aged 0–17 with familial high risk for severe mental illness—a Danish register study. *Schizophr Res*. 2018;197:298–304.
5. Miyake A, Friedman NP, Emerson MJ, Witzki AH, Howerter A, Wager TD. The unity and diversity of executive functions and their contributions to complex “Frontal Lobe” tasks: a latent variable analysis. *Cogn Psychol*. 2000;41(1):49–100.
6. Ridderinkhof KR, van den Wildenberg WPM, Segalowitz SJ, Carter CS. Neurocognitive mechanisms of cognitive control: the role of prefrontal cortex in action selection, response inhibition, performance monitoring, and reward-based learning. *Brain Cogn*. 2004;56(2):129–140.
7. Xu M, Xu G, Yang Y. Neural systems underlying emotional and non-emotional interference processing: an ALE meta-analysis of functional neuroimaging studies. *Front Behav Neurosci*. 2016;10:220.
8. Melcher T, Falkai P, Gruber O. Functional brain abnormalities in psychiatric disorders: neural mechanisms to detect and resolve cognitive conflict and interference. *Brain Res Rev*. 2008;59(1):96–124.
9. Morey RA, Inan S, Mitchell TV, Perkins DO, Lieberman JA, Belger A. Imaging frontostriatal function in ultra-high-risk, early, and chronic schizophrenia during executive processing. *Arch Gen Psychiatry*. 2005;62(3):254–262.
10. Phillips ML, Ladouceur CD, Drevets WC. A neural model of voluntary and automatic emotion regulation: implications for understanding the pathophysiology and neurodevelopment of bipolar disorder. *Mol Psychiatry*. 2008;13(9):833–857.
11. Fusar-Poli P, Howes O, Bechdolf A, Borgwardt S. Mapping vulnerability to bipolar disorder: a systematic review and meta-analysis of neuroimaging studies. *J Psychiatry Neurosci*. 2012;37(3):170–184.
12. Sambataro F, Mattay VS, Thurin K, et al. Altered cerebral response during cognitive control: a potential indicator of genetic liability for schizophrenia. *Neuropsychopharmacology*. 2013;38(5):846–853.
13. Arts B, Jabben N, Krabbendam L, van Os J. Meta-analyses of cognitive functioning in euthymic bipolar patients and their first-degree relatives. *Psychol Med*. 2008;38(6):771–785.
14. Vink M, Ramsey NF, Raemaekers M, Kahn RS. Striatal dysfunction in schizophrenia and unaffected relatives. *Biol Psychiatry*. 2006;60(1):32–39.
15. Piguet C, Fodoulou L, Aubry JM, Vuilleumier P, Houenou J. Bipolar disorder: functional neuroimaging markers in relatives. *Neurosci Biobehav Rev*. 2015;57:284–296.
16. Moran ME, Hulshoff Pol H, Gogtay N. A family affair: brain abnormalities in siblings of patients with schizophrenia. *Brain*. 2013;136(11):3215–3226.
17. Patino LR, Adler CM, Mills NP, et al. Conflict monitoring and adaptation in individuals at familial risk for developing bipolar disorder. *Bipolar Disord*. 2013;15(3):264–271.
18. Keshavan M, Kulkarni S, Bhojraj T, et al. Premorbid cognitive deficits in young relatives of schizophrenia patients. *Front Hum Neurosci*. 2010;3:62.
19. Faraone S, Seidman L, Kremen W, et al. Neuropsychological functioning among the nonpsychotic relatives of schizophrenic patients. *J Abnorm Psychol*. 1995;104(2):286–304.

20. Deveney CM, Connolly ME, Jenkins SE, *et al.* Striatal dysfunction during failed motor inhibition in children at risk for bipolar disorder. *Prog Neuro-psychopharmacol Biol Psychiatry*. 2012;38(2):127–133.
21. Diwadkar VA, Bakshi N, Gupta G, Pruitt P, White R, Eickhoff SB. Dysfunction and dysconnection in cortical-striatal networks during sustained attention: genetic risk for schizophrenia or bipolar disorder and its impact on brain network function. *Front Psychiatry*. 2014;5:50.
22. Kim P, Jenkins SE, Connolly ME, *et al.* Neural correlates of cognitive flexibility in children at risk for bipolar disorder. *J Psychiatr Res*. 2012;46(1):22–30.
23. Pagliaccio D, Wiggins JL, Adleman NE, *et al.* Behavioral and neural sustained attention deficits in bipolar disorder and familial risk of bipolar disorder. *Biol Psychiatry*. 2017;82(9):669–678.
24. Johnsen LK, Ver Loren van Themaat AH, Larsen KM, *et al.* Alterations in task-related brain activation in children, adolescents and young adults at familial high-risk for schizophrenia or bipolar disorder—a systematic review. *Front Psychiatry*. 2020;11:632.
25. Thorup AA, Jepsen JR, Ellersgaard DV, *et al.* The Danish High Risk and Resilience Study—VIA 7—a cohort study of 520 7-year-old children born of parents diagnosed with either schizophrenia, bipolar disorder or neither of these two mental disorders. *BMC Psychiatry*. 2015;15:233.
26. Thorup AAE, Hemager N, Søndergaard A, *et al.* The Danish High Risk and Resilience Study—VIA 11: study protocol for the first follow-up of the VIA 7 cohort –522 children born to parents with schizophrenia spectrum disorders or bipolar disorder and controls being re-examined for the first time at age 11. *Front Psychiatry*. 2018;9:661.
27. Burton BK, Vangkilde S, Petersen A, *et al.* Sustained attention and interference control among 7-year-old children with a familial high risk of schizophrenia or bipolar disorder—a Nationwide Observational Cohort Study. *Biol Psychiatry Cogn Neurosci Neuroimaging*. 2018;3(8):704–712.
28. Hemager N, Plessen KJ, Thorup A, *et al.* Assessment of neurocognitive functions in 7-year-old children at familial high risk for schizophrenia or bipolar disorder: The Danish High Risk and Resilience Study VIA 7. *JAMA Psychiatry*. 2018;75(8):844–852.
29. Burton B, Petersen A, Eichele H, *et al.* Post-error adjustment among children aged 7 years with a familial high risk of schizophrenia or bipolar disorder: a population-based cohort study. *Dev Psychopathol*. 2021;34(5):2023–2033.
30. Hemager N, Vangkilde S, Thorup A, *et al.* Visual attention in 7-year-old children at familial high risk of schizophrenia or bipolar disorder: The Danish high risk and resilience study VIA 7. *J Affect Disord*. 2019;258:56–65.
31. Knudsen CB, Hemager N, Greve AN, *et al.* Neurocognitive development in children at familial high risk of schizophrenia or bipolar disorder. *JAMA Psychiatry*. 2022;79:589–599.
32. Gottesman II, Gould TD. The endophenotype concept in psychiatry: etymology and strategic intentions. *Am J Psychiatry*. 2003;160(4):636–645.
33. Ver Loren van Themaat A, Larsen KM, Oranje B, *et al.* Event-related electroencephalographic responses in children at familial high risk for schizophrenia or bipolar disorder: a single-site EEG sub-study of the Danish High Risk and Resilience Study-VIA 11. *PsyArXiv*. 2019. doi:10.31234/osf.io/hvxg8.
34. Burton BK, Thorup AAE, Jepsen JR, *et al.* Impairments of motor function among children with a familial risk of schizophrenia or bipolar disorder at 7 years old in Denmark: an observational cohort study. *Lancet Psychiatry*. 2017;4(5):400–408.
35. Eriksen BA, Eriksen CW. Effects of noise letters upon the identification of a target letter in a nonsearch task. *Percept Psychophys*. 1974;16(1):143–149.
36. Plessen KJ, Allen EA, Eichele H, *et al.* Reduced error signalling in medication-naïve children with ADHD: associations with behavioural variability and post-error adaptations. *J Psychiatry Neurosci*. 2016;41(2):77–87.
37. Ridderinkhof KR, Scheres A, Oosterlaan J, Sergeant JA. Distribution-analytical techniques in the study of AD/HD: delta plot analyses reveal deficits in response inhibition that are eliminated by methylphenidate treatment. *J Abnorm Psychol*. 2005;114(2):197–215.
38. Dienes Z. How Bayes factors change scientific practice. *J Math Psychol*. 2016;72:78–89.
39. Woo C-W, Krishnan A, Wager TD. Cluster-extent based thresholding in fMRI analyses: Pitfalls and recommendations. *NeuroImage*. 2014;91:412–441.
40. Niendam TA, Laird AR, Ray KL, Dean YM, Glahn David C, Carter CS. Meta-analytic evidence for a superordinate cognitive control network subserving diverse executive functions. *Cogn Affect Behav Neurosci*. 2012;12(2):241–268.
41. Brotman MA, Rooney MH, Skup M, Pine DS, Leibenluft E. Increased intrasubject variability in response time in youths with bipolar disorder and at-risk family members. *J Am Acad Child Adolesc Psychiatry*. 2009;48(6):628–635.
42. Russell VA, Oades RD, Tannock R, *et al.* Response variability in attention-deficit/hyperactivity disorder: a neuronal and glial energetics hypothesis. *Behav Brain Funct*. 2006;2(1):30.
43. Kerns JG, Cohen JD, MacDonald AWI, *et al.* Decreased conflict- and error-related activity in the anterior cingulate cortex in subjects with schizophrenia. *Am J Psychiatry*. 2005;162(10):1833–1839.
44. Gruber SA, Rogowska J, Yurgelun-Todd DA. Decreased activation of the anterior cingulate in bipolar patients: an fMRI study. *J Affect Disord*. 2004;82(2):191–201.
45. Kofler MJ, Rapport MD, Sarver DE, *et al.* Reaction time variability in ADHD: a meta-analytic review of 319 studies. *Clin Psychol Rev*. 2013;33(6):795–811.
46. Bora E, Lin A, Wood SJ, Yung AR, McGorry PD, Pantelis C. Cognitive deficits in youth with familial and clinical high risk to psychosis: a systematic review and meta-analysis. *Acta Psychiatr Scand*. 2014;130(1):1–15.
47. Bora E, Özerdem A. A meta-analysis of neurocognition in youth with familial high risk for bipolar disorder. *Eur Psychiatry*. 2017;44:17–23.
48. Scarpina F, Tagini S. The Stroop Color and Word Test. *Front Psychol*. 2017;8:557.
49. Stroop JR. Studies of interference in serial verbal reactions. *J Exp Psychol*. 1935;18(6):643–662.
50. De la Serna E, Camprodón-Boadas P, Ilzarbe D, *et al.* Neuropsychological development in the child and adolescent offspring of patients diagnosed with schizophrenia or bipolar disorder: a two-year follow-up comparative study. *Prog Neuropsychopharmacol Biol Psychiatry*. 2020;103:109972.
51. Chen T, Becker B, Camilleri J, *et al.* A domain-general brain network underlying emotional and cognitive interference processing: evidence from coordinate-based and functional connectivity meta-analyses. *Brain Struct Funct*. 2018;223(8):3813–3840.

52. Cieslik EC, Mueller VI, Eickhoff CR, Langner R, Eickhoff SB. Three key regions for supervisory attentional control: evidence from neuroimaging meta-analyses. *Neurosci Biobehav Rev*. 2015;48:22–34.
53. Nee DE, Wager TD, Jonides J. Interference resolution: insights from a meta-analysis of neuroimaging tasks. *Cogn Affect Behav Neurosci*. 2007;7(1):1–17.
54. Duncan J, Owen AM. Common regions of the human frontal lobe recruited by diverse cognitive demands. *Trends Neurosci*. 2000;23(10):475–483.
55. Luna B, Sweeney JA. The emergence of collaborative brain function: fMRI studies of the development of response inhibition. *Ann N Y Acad Sci*. 2004;1021(1):296–309.
56. Luna B, Thulborn KR, Munoz DP, et al. Maturation of widely distributed brain function subserves cognitive development. *Neuroimage*. 2001;13(5):786–793.
57. Madsen KS, Johansen LB, Thompson WK, Siebner HR, Jernigan Terry L, Baaré William F C. Maturation trajectories of white matter microstructure underlying the right presupplementary motor area reflect individual improvements in motor response cancellation in children and adolescents. *Neuroimage*. 2020;220:117105.
58. Leibenluft E, Barch DM. Adolescent brain development and psychopathology: introduction to the special issue. *Biol Psychiatry*. 2021;89(2):93–95.
59. Reichenberg A, Caspi A, Harrington H, et al. Static and dynamic cognitive deficits in childhood preceding adult schizophrenia: a 30-year study. *Am J Psychiatry*. 2010;167(2):160–169.
60. Thorup AAE, Hemager N, Bliksted VF, et al. The Danish High-Risk and Resilience Study—VIA 15—a study protocol for the third clinical assessment of a cohort of 522 children born to parents diagnosed with schizophrenia or bipolar disorder and population-based controls. *Front Psychiatry*. 2022;13:809807.
61. Seidman LJ, Nordentoft M. New targets for prevention of schizophrenia: is it time for interventions in the premorbid phase? *Schizophr Bull*. 2015;41(4):795–800.
62. Hameed MA, Lewis AJ. Offspring of parents with schizophrenia: a systematic review of developmental features across childhood. *Harv Rev Psychiatry*. 2016;24(2):104–117.